



LABOR SITUATION

Office of Research
Danté Bartolomeo, Commissioner

FOR IMMEDIATE RELEASE

January 2025 Data
CT Unemployment Rate = 3.3%
US Unemployment Rate = 4.0%

On the new benchmark, CT adds 2,300 jobs in January; jobless rate edged up to 3.3%

WETHERSFIELD, March 14, 2025 – Connecticut added 2,300 payroll jobs (0.1%) in January 2025 to a level of 1,718,400 while the state’s unemployment rate was up one-tenth of one percent to 3.3% (preliminary, seasonally adjusted data). Statewide payroll jobs are now 14,400 (0.8%) positions higher than a year ago. The December 2024 preliminary job gain of 5,100 (0.3%, on the old benchmark) was lowered to a still healthy gain of 3,500 jobs (0.2%, on the new benchmark). After all the revisions, December’s nonfarm employment level was just 200 jobs higher than previously estimated. The January 2025 preliminary Connecticut jobless rate, at 3.3%, is unchanged from a year ago (3.3%, after annual processing) and well below the nation’s (4.0%). *This labor statistics report presents current estimated data from two different monthly surveys (businesses and households) produced by the U.S. Bureau of Labor Statistics (BLS) in association with the states - and depicts the new CT regional Labor Markets.*

“Benchmark revisions confirm that Connecticut had solid job growth in 2024 and sustained a low unemployment rate below 3.5% for two years,” said Patrick Flaherty, Director of the Office of Research at the Connecticut Department of Labor. “January’s jobs increase shows Connecticut starts the year with growth in a wide range of industries. Private sector employment has achieved a new all-time high.”

Connecticut’s private sector employment grew 1,900 positions (0.1%) over-the-month in January 2025 to 1,483,700 and is up by 14,200 jobs (1.0%) from the revised January 2024 level. December’s preliminary private sector gain of 4,700 jobs was adjusted lower to a 3,600 increase, but the revised December level on the new benchmark is just 600 jobs below the previous estimate on the prior benchmark. The **government supersector** also added 400 jobs (0.2%) in January to a level of 234,700 jobs but is now just slightly higher by 200 (0.1%) positions over the year. *Connecticut’s aggregate government supersector consists of all civilian federal, state, local, and tribal government employment, including public education and Native American casino jobs located on federally recognized tribal reservations.*

Six of the ten major industry *supersectors* increased jobs in January 2025, while three declined, and the manufacturing *supersector* was unchanged.

The seven industry *supersectors* that increased employment or were unchanged in January 2025 included:

| Increasing Supersectors | | | |
|------------------------------------|--------------------|----------------|-------------------------|
| Industry Supersector | Amount of Increase | Percent Change | January 2025 Employment |
| Professional & Business Services | +1,800 | 0.8% | 223,200 |
| Financial Activities | +600 | 0.5% | 119,200 |
| Government | +400 | 0.2% | 234,700 |
| Trade, Transportation, & Utilities | +200 | 0.1% | 299,800 |
| Education & Health Services | +200 | 0.1% | 371,900 |
| Leisure & Hospitality | +100 | 0.1% | 157,000 |
| Manufacturing | unchanged | 0.0% | 155,400 |

The three industry *supersector* that decreased jobs in January 2025 were:

| Decreasing Supersectors | | | |
|-------------------------|--------------------|----------------|-------------------------|
| Industry Supersector | Amount of Decrease | Percent Change | January 2025 Employment |
| Construction & Mining | -800 | -1.3% | 62,800 |
| Information | -100 | -0.3% | 30,400 |
| Other Services | -100 | -0.2% | 64,000 |

Connecticut Labor Market Areas (LMAs): Three of the five new major Connecticut **LMAs** (5 Metros formed from the CT Councils of Governments or COG regions) that are seasonally adjusted by the BLS (over 93.7% of the state) show nonfarm payroll job gains, while two declined in January 2025. The **Bridgeport-Stamford-Danbury LMA** (0.1%, 410,900) added 400 positions, and the **Norwich-New London-Willimantic LMA** (0.2%, 128,600) chipped in 300 jobs. The **New Haven LMA** (0.1%, 295,900) increased by 200 in employment. The **Hartford-West Hartford-East Hartford LMA** (-0.3%, 609,000) decreased by 1,600, and the **Waterbury-Shelton LMA** (-0.1%, 162,000) declined by 100 jobs.

Note: The new five major Connecticut LMAs are independently estimated from the statewide data by the BLS and cover over 93% of the nonfarm employment in the state. Thus, estimates will not exactly sum to the statewide total. Also, monthly Seasonal Adjustment (SA) on these 5 new designated COG-based labor markets may undergo some shifting seasonality effects due to the concurrent seasonal process exaggerating some movements on the new geographies. For example, this month, the expanded Hartford LMA's bigger drop may have been associated with more student laborers in the new region that are off from the college job in January and the inclusion of the more seasonal Lower CT River region, which is out of the tourist season.

Hours and Earnings: The January 2025 **private sector** average workweek, *not seasonally adjusted*, averaged 33.2 hours (AWH). This is unchanged from the January 2024 average (0.0%). Average hourly earnings (AHE) at \$38.94 in January 2025, *not seasonally adjusted*, were up by \$1.89 (5.1%) from the January 2024 estimate of \$37.05. The resulting January 2025 private sector average weekly earnings (AWE) were estimated at \$1,292.81, higher by \$62.75 (5.1%) from a year ago (\$1,230.06). The Consumer Price Index for All Urban Consumers (CPI-U, U.S. City Average, not seasonally adjusted - all items index) for January 2025 was up 3.0% from a year ago. CT private sector all-employee wage growth continues to be above inflation.

Note: Current all-employee private sector hours and earnings estimates can be volatile due to fluctuating sample responses.

Labor Force Data (residential household survey)

The preliminary January 2025 unemployment rate for Connecticut was estimated by the BLS Local Area Unemployment Statistics program (LAUS) to be **3.3%** (seasonally adjusted). This is up from December 2024, when it was 3.2%. After the LAUS Annual Processing, CT's annual average unemployment rate was unchanged (3.3%) from a year ago. The U.S. unemployment rate for January 2025 was 4.0%, down one-tenth of one percent from the December 2024 rate and higher over the year from 3.7% in January 2024.

Average weekly initial unemployment claims (*not seasonally adjusted*) for first-time filers (AWIC) in Connecticut for January 2025 were 4,059. This is 1,436 (-26.1%) claims lower than December 2024 (5,495) and lower by 180 claims (-4.2%) than the January 2024 (4,239) level.

The nonfarm employment estimate, derived from a survey of businesses, is a measure of jobs in the state; the unemployment rate and labor force estimates are based on a household survey and measure the work status of people who live in Connecticut. Because of the distinct differences both in concept and scope between the two estimates, nonfarm employment and unemployment do not necessarily move in the same economic direction month to month. Job and employment estimates are best understood in the context of their movement over several months rather than observed changes in a single month's value.

Next Connecticut Labor Situation release: Thursday, March 27, 2025
(Preliminary February 2025 data on the new benchmark)

Contact: Communications, CT Department of Labor
CTDOL.Communications@ct.gov

Labor Market Information is available at: www.ctworkforce.info
200 Folly Brook Boulevard, Wethersfield, CT 06109-1114 www.ct.gov/dol
An Equal Opportunity/Affirmative Action Employer

NONFARM EMPLOYMENT

Jobs - by Place of Work

CONNECTICUT AND THE UNITED STATES - Seasonally Adjusted

| | January 2025 P | December 2024 R | November 2024 | October 2024 | January 2024 | Over Month Change | Over Month Rate | Over Year Change | Over Year Rate |
|-------------------------------------|--------------------|--------------------|--------------------|--------------------|--------------------|----------------------|--------------------|---------------------|-------------------|
| CONNECTICUT | 1,718,400 | 1,716,100 | 1,712,600 | 1,711,000 | 1,704,000 | 2,300 | 0.1% | 14,400 | 0.8% |
| Total Private | 1,483,700 | 1,481,800 | 1,478,200 | 1,476,700 | 1,469,500 | 1,900 | 0.1% | 14,200 | 1.0% |
| Goods Producing Industries | | | | | | | | | |
| Mining | 500 | 500 | 500 | 500 | 400 | 0 | 0.0% | 100 | 25.0% |
| Construction | 62,300 | 63,100 | 63,100 | 63,100 | 62,500 | -800 | -1.3% | -200 | -0.3% |
| Manufacturing | 155,400 | 155,400 | 155,500 | 155,700 | 157,100 | 0 | 0.0% | -1,700 | -1.1% |
| Durable Goods | 121,800 | 122,100 | 122,100 | 122,400 | 123,100 | -300 | -0.2% | -1,300 | -1.1% |
| Nondurable Goods | 33,600 | 33,300 | 33,400 | 33,300 | 34,000 | 300 | 0.9% | -400 | -1.2% |
| Service Providing Industries | | | | | | | | | |
| Trade, Transportation & Utilities | 299,800 | 299,600 | 298,900 | 298,300 | 299,100 | 200 | 0.1% | 700 | 0.2% |
| Wholesale | 61,600 | 61,300 | 61,100 | 60,800 | 61,000 | 300 | 0.5% | 600 | 1.0% |
| Retail | 165,000 | 165,400 | 164,200 | 164,800 | 166,000 | -400 | -0.2% | -1,000 | -0.6% |
| Transp, Warehousing & Utilities | 73,200 | 72,900 | 73,600 | 72,700 | 72,100 | 300 | 0.4% | 1,100 | 1.5% |
| Information | 30,400 | 30,500 | 30,200 | 30,600 | 30,900 | -100 | -0.3% | -500 | -1.6% |
| Financial Activities | 119,200 | 118,600 | 118,500 | 117,800 | 117,800 | 600 | 0.5% | 1,400 | 1.2% |
| Finance & Insurance | 99,300 | 98,700 | 98,600 | 98,100 | 98,200 | 600 | 0.6% | 1,100 | 1.1% |
| Real Estate, Rental & Leasing | 19,900 | 19,900 | 19,900 | 19,700 | 19,600 | 0 | 0.0% | 300 | 1.5% |
| Professional & Business Services | 223,200 | 221,400 | 221,600 | 222,400 | 221,100 | 1,800 | 0.8% | 2,100 | 0.9% |
| Prof, Scientific & Tech Services | 102,300 | 100,900 | 101,200 | 101,800 | 100,900 | 1,400 | 1.4% | 1,400 | 1.4% |
| Management of Companies | 31,000 | 31,000 | 30,900 | 30,900 | 30,800 | 0 | 0.0% | 200 | 0.6% |
| Admn & Support & Waste Mgt Serv | 89,900 | 89,500 | 89,500 | 89,700 | 89,400 | 400 | 0.4% | 500 | 0.6% |
| Educational & Health Services | 371,900 | 371,700 | 370,800 | 370,000 | 361,800 | 200 | 0.1% | 10,100 | 2.8% |
| Private Educational Services | 74,700 | 75,100 | 75,300 | 75,300 | 72,500 | -400 | -0.5% | 2,200 | 3.0% |
| Health Care & Social Assistance | 297,200 | 296,600 | 295,500 | 294,700 | 289,300 | 600 | 0.2% | 7,900 | 2.7% |
| Leisure and Hospitality | 157,000 | 156,900 | 154,900 | 154,300 | 155,200 | 100 | 0.1% | 1,800 | 1.2% |
| Arts, Entertainment & Recreation | 28,000 | 28,300 | 28,000 | 27,800 | 28,300 | -300 | -1.1% | -300 | -1.1% |
| Accommodation & Food Services | 129,000 | 128,600 | 126,900 | 126,500 | 126,900 | 400 | 0.3% | 2,100 | 1.7% |
| Other Services | 64,000 | 64,100 | 64,200 | 64,000 | 63,600 | -100 | -0.2% | 400 | 0.6% |
| Government** | 234,700 | 234,300 | 234,400 | 234,300 | 234,500 | 400 | 0.2% | 200 | 0.1% |
| UNITED STATES | 159,069,000 | 158,926,000 | 158,619,000 | 158,358,000 | 157,049,000 | 143,000 | 0.1% | 2,020,000 | 1.3% |

LABOR MARKET AREAS (LMAs, COG-based)

Labor Market Area employment estimates are made independently of Statewide estimates.

| Seasonally Adjusted data (Metros) Metropolitan Statistical Areas (5 CT MSAs) | January 2025 P | December 2024 R | November 2024 | October 2024 | January 2024 | Over Month Change | Over Month Rate | Over Year Change | Over Year Rate |
|--|-------------------|--------------------|------------------|-----------------|-----------------|----------------------|--------------------|---------------------|-------------------|
| Bridgeport-Stamford-Danbury | 410,900 | 410,500 | 409,200 | 409,000 | 407,400 | 400 | 0.1% | 3,500 | 0.9% |
| Hartford | 609,000 | 610,600 | 609,300 | 609,700 | 607,500 | -1,600 | -0.3% | 1,500 | 0.2% |
| New Haven | 295,900 | 295,700 | 294,400 | 292,600 | 293,000 | 200 | 0.1% | 2,900 | 1.0% |
| Norwich-New London-Willimantic | 128,600 | 128,300 | 127,600 | 127,900 | 126,800 | 300 | 0.2% | 1,800 | 1.4% |
| Waterbury - Shelton | 162,000 | 162,100 | 161,000 | 161,000 | 160,600 | -100 | -0.1% | 1,400 | 0.9% |
| <i>Not Seasonally Adjusted data (Non-Classified Areas, 2 Micropolitan Statistical Areas - Micros, State estimated - not BLS)</i> | | | | | | | | | |
| Putnam - Northeastern | 28,300 | 28,800 | 28,900 | 28,900 | 28,700 | -500 | -1.7% | -400 | -1.4% |
| Torrington - Northwest Hills | 37,400 | 38,100 | 38,200 | 38,500 | 36,400 | -700 | -1.8% | 1,000 | 2.7% |

* Less than 0.05%

** Includes Native American tribal government employment

P = Preliminary

R = Revised

Starting in March, 2011, our monthly statewide and major LMA nonfarm job estimates have been taken over by the US Department of Labor Bureau of Labor Statistics. This is the final phase of transition in this program, which began in 2008. As a result of changes in the estimation procedures, you are likely to see more variability in month-to-month estimates of job counts. Caution should be used in interpreting any single month's estimate. The data are best interpreted to identify trends and cycles over several months and quarters. If you have any questions about these changes, please email us at: dol.lmi@ct.gov. COG - Council of Government regions.

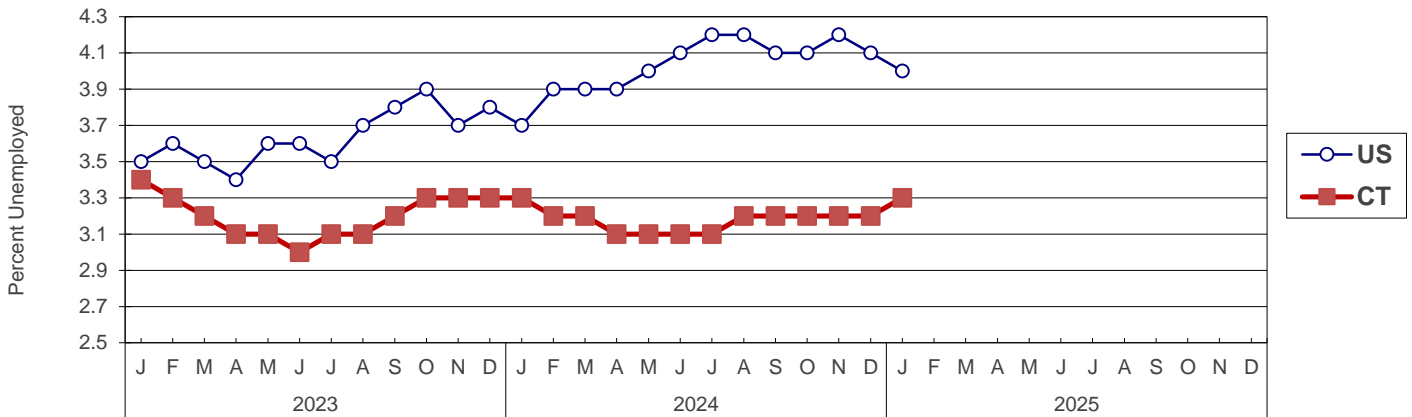
UNEMPLOYMENT

Persons Unemployed - by Place of Residence

CONNECTICUT AND THE UNITED STATES - Seasonally Adjusted

| | Jan 2025 P | | Jan 2024 R | | Change | | Dec 2024 R | |
|----------------------|-------------|------|-------------|------|-----------|--------|-------------|------|
| | Number | Rate | Number | Rate | Number | Points | Number | Rate |
| CONNECTICUT | | | | | | | | |
| Unemployed | 63,900 | 3.3 | 63,600 | 3.3 | 300 | 0.0 | 62,500 | 3.2 |
| Labor Force | 1,957,300 | | 1,926,900 | | 30,400 | | 1,955,600 | |
| UNITED STATES | | | | | | | | |
| Unemployed | 6,849,000 | 4.0 | 6,149,000 | 3.7 | 700,000 | 0.3 | 6,886,000 | 4.1 |
| Labor Force | 170,744,000 | | 167,339,000 | | 3,405,000 | | 168,547,000 | |

U.S. AND CONNECTICUT UNEMPLOYMENT RATES - Seasonally Adjusted 2023 - 2025



LABOR MARKET AREAS - Not Seasonally Adjusted

| | Jan 2025 P | | Jan 2024 R | | Change | | Dec 2024 R | |
|-------------------------|------------------|------------|------------------|------------|----------------|------------|------------------|------------|
| | Number | Rate | Number | Rate | Number | Points | Number | Rate |
| Bridpt-Stamford-Danbury | 19,600 | 3.8 | 18,200 | 3.6 | 1,400 | 0.2 | 13,400 | 2.6 |
| Hartford-W.Htfd-E.Htfd | 24,300 | 4.0 | 22,400 | 3.7 | 1,900 | 0.3 | 16,800 | 2.7 |
| New Haven | 12,300 | 3.9 | 11,400 | 3.7 | 900 | 0.2 | 8,400 | 2.6 |
| Norwich-New Lon.-Willi. | 5,700 | 3.9 | 5,200 | 3.7 | 500 | 0.2 | 3,800 | 2.6 |
| Putnam-Northeast | 1,800 | 4.3 | 1,600 | 3.7 | 200 | 0.6 | 1,200 | 2.8 |
| Torrington-Northwest | 1,900 | 4.1 | 1,700 | 3.8 | 200 | 0.3 | 1,200 | 2.5 |
| Waterbury-Shelton | 11,100 | 4.6 | 10,500 | 4.4 | 600 | 0.2 | 7,500 | 3.1 |
| CONNECTICUT | 77,600 | 4.0 | 71,900 | 3.7 | 5,700 | 0.3 | 52,800 | 2.7 |
| UNITED STATES | 7,467,000 | 4.4 | 6,778,000 | 4.1 | 689,000 | 0.3 | 6,452,000 | 3.8 |

P = Preliminary

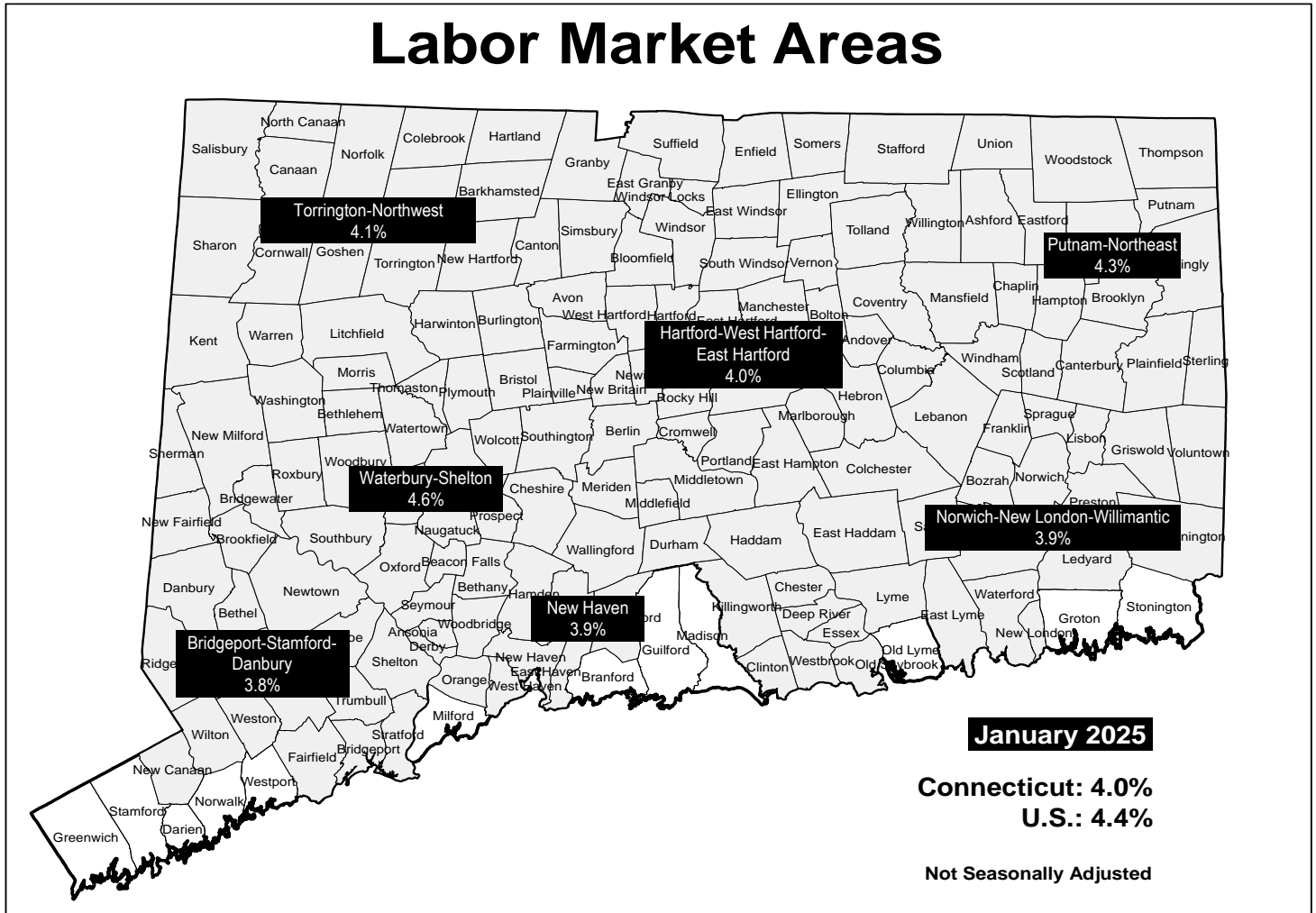
R = Revised

Labor force data included in this publication are developed in cooperation with the U.S. Department of Labor, Bureau of Labor Statistics.

UNEMPLOYMENT RATES

Not Seasonally Adjusted

Labor Market Areas



HOURS AND EARNINGS

CONNECTICUT Statewide - Not Seasonally Adjusted

| | Average Weekly Earnings | | | | Average Weekly Hours | | | | Average Hourly Earnings | | | |
|---------------------------------------|-------------------------|------------|-----------------|-------------|----------------------|-----------|-----------------|-------------|-------------------------|-----------|-----------------|-------------|
| | Jan. 2025 P | Jan. 2024 | Change over Yr. | Dec. 2024 R | Jan. 2025 P | Jan. 2024 | Change over Yr. | Dec. 2024 R | Jan. 2025 P | Jan. 2024 | Change over Yr. | Dec. 2024 R |
| Private Industry All Employees | \$1,292.81 | \$1,230.06 | \$62.75 | \$1,311.78 | 33.2 | 33.2 | 0.0 | 33.8 | \$38.94 | \$37.05 | \$1.89 | \$38.81 |
| Manufacturing* | | | | | | | | | | | | |
| Production Workers | \$1,224.16 | \$1,191.51 | \$32.65 | \$1,247.40 | 39.4 | 38.9 | 0.5 | 39.4 | \$31.07 | \$30.63 | \$0.44 | \$31.66 |

* Production worker data have been impacted by the loss of a large, high-paying manufacturer from the monthly sample.

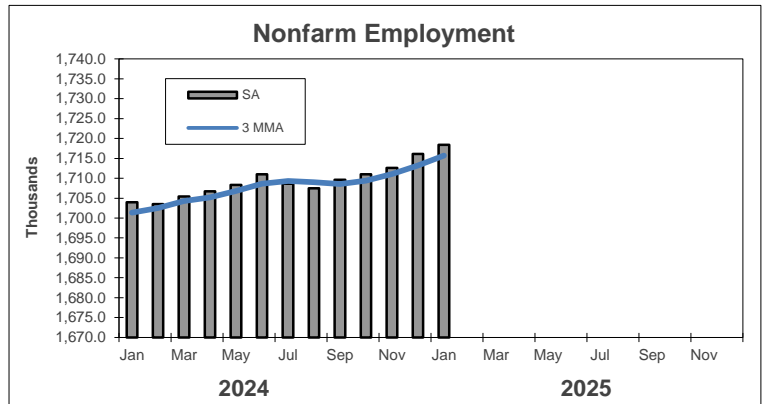
P = Preliminary R = Revised

Hours and earnings are also developed for the state's major industry sectors and Labor Market Areas. They can be found on our website at: www1.ctdol.state.ct.us/lmi

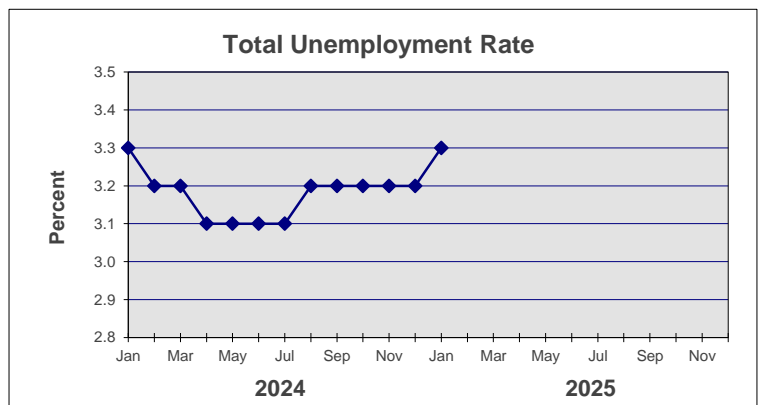
TRENDS

Seasonally Adjusted

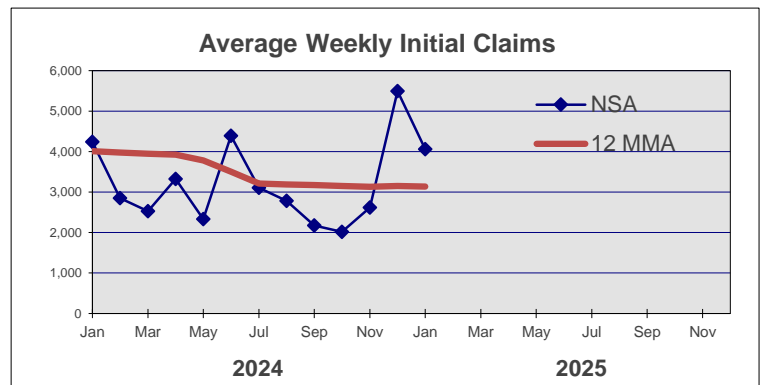
| | Nonfarm Employment (000s) | Total Unemployment Rate |
|-------------|------------------------------|----------------------------|
| 2024 | | |
| Jan | 1,704.0 | 3.3 |
| Feb | 1,703.5 | 3.2 |
| Mar | 1,705.4 | 3.2 |
| Apr | 1,706.7 | 3.1 |
| May | 1,708.3 | 3.1 |
| Jun | 1,711.0 | 3.1 |
| Jul | 1,708.6 | 3.1 |
| Aug | 1,707.5 | 3.2 |
| Sep | 1,709.6 | 3.2 |
| Oct | 1,711.0 | 3.2 |
| Nov | 1,712.6 | 3.2 |
| Dec | 1,716.1 R | 3.2 R |



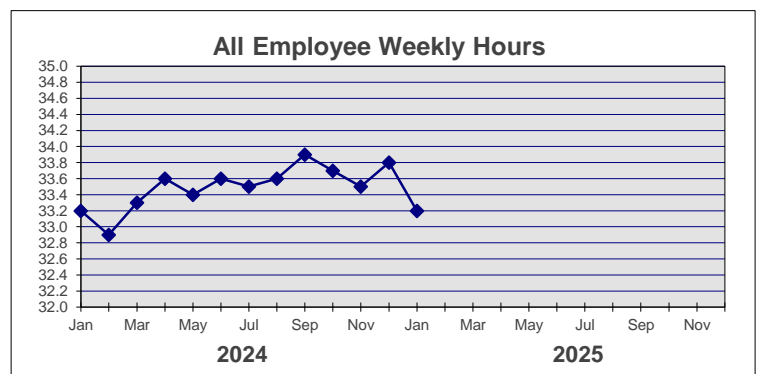
| | | |
|-------------|-----------|-------|
| 2025 | | |
| Jan | 1,718.4 P | 3.3 P |
| Feb | | |
| Mar | | |
| Apr | | |
| May | | |
| Jun | | |
| Jul | | |
| Aug | | |
| Sep | | |
| Oct | | |
| Nov | | |
| Dec | | |



| | NSA Avg Weekly Initial Claims | All Employee Weekly Hours* |
|-------------|----------------------------------|-------------------------------|
| 2024 | | |
| Jan | 4,239 | 33.2 |
| Feb | 2,847 | 32.9 |
| Mar | 2,525 | 33.3 |
| Apr | 3,324 | 33.6 |
| May | 2,331 | 33.4 |
| Jun | 4,389 | 33.6 |
| Jul | 3,109 | 33.5 |
| Aug | 2,780 | 33.6 |
| Sep | 2,173 | 33.9 |
| Oct | 2,017 | 33.7 |
| Nov | 2,621 | 33.5 |
| Dec | 5,495 | 33.8 R |



| | | |
|-------------|-------|--------|
| 2025 | | |
| Jan | 4,059 | 33.2 P |
| Feb | | |
| Mar | | |
| Apr | | |
| May | | |
| Jun | | |
| Jul | | |
| Aug | | |
| Sep | | |
| Oct | | |
| Nov | | |
| Dec | | |



* Not seasonally adjusted

P = Preliminary

R = Revised

** Labor-management dispute